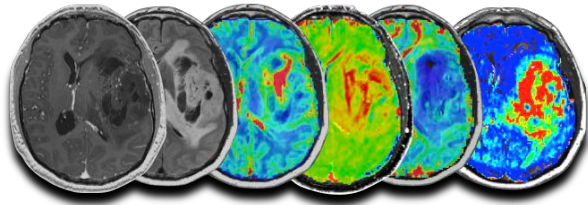


## BRAIN MRI STUDY



If you are  $\geq 18$  years old and you have been diagnosed with a primary or recurrent high grade gliomas, you may be eligible to participate in a research study to collect information from your Brain MRI exams to help improve early detection and understand brain tumor metabolism.

If you choose to participate, you will have a 60 minutes pre- and post- treatment Brain MRI scans as part of a routine workup **plus** an additional research MRI scans for up to 15 extra minutes.

There is no fee to participate in the study. The study will pay for the entire 75 minute MRI exam or the additional 15 minutes research scans.

For more information on how to enroll in this study, please inform your treating physician and contact our study team:

### **Principal Investigator**

**Benjamin Ellingson, PhD**

[BEllingson@mednet.ucla.edu](mailto:BEllingson@mednet.ucla.edu)

310-481-7572

### **Study Coordinators**

**Catalina Raymond**

[CRaymond@mednet.ucla.edu](mailto:CRaymond@mednet.ucla.edu)

310-481-7566

**Saima Chaabane, PhD**

[SChaabane@mednet.ucla.edu](mailto:SChaabane@mednet.ucla.edu)

310-794-8995

This study is supported by the **American Cancer Society**.